

## GRAVIMETRIC DOSERS

## ACCESSORIES



### CD Series™

**Batch type** gravimetric doser. Up to six individual components. High accuracy of +/- 0.1%. Exceptionally good mixing. Main component percentage range: 0% or 20-100%. Other component percentage range: 0-100%.  
 CD 100 – up to 100 kg/h.  
 CD 400 – up to 400 kg/h.  
 CD 800 – up to 800 kg/h.  
 CD 800 HD-200 – up to 1000 kg/h.  
 CD 800 HD-400 – up to 1200 kg/h.  
 CD 800 HD-600 – up to 1500 kg/h.  
 Can be installed on or off the machine's throat.



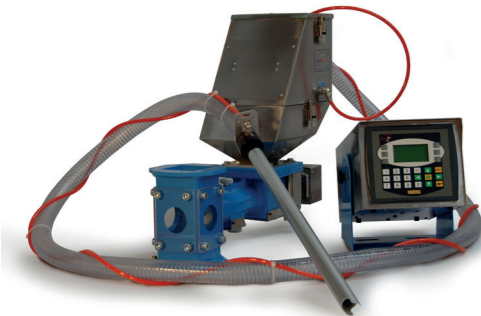
### CD Plus™ Series

**Batch type** standard CD-400 and CD-800 systems with automatic self recycling screw. For extrusion inline machines and continuous edge trimming lines.



### Beltcolor™

**Loss in weight** gravimetric belt doser for colors and additives. For extrusion and injection molding. Wide dynamic feeding range under one setup. Exceptional linear feeding rate. Built-in Venturi loader. Suitable for granules and micro granules. Works in combination with the CD Dosing Systems.



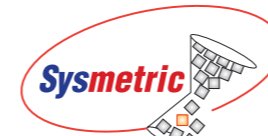
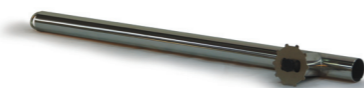
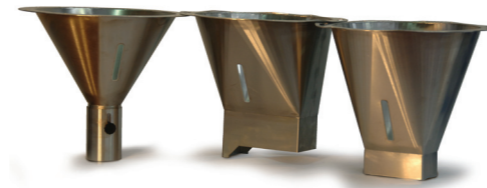
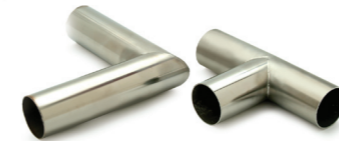
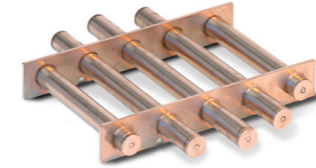
### Gravicolor™

**Loss in weight** gravimetric screw doser for colors and additives. For extrusion and injection molding. Built-in Venturi loader. Works in combination with the CD Dosing Systems.



### LW Series™

**Loss in weight** gravimetric dosing unit. Up to 8 components. The ultimate doser for dosing materials with different properties and for extruder starvation feeding. Easy to commit line control. Can be installed on or off the machine's throat.



*simply accurate*

### Head Office

P.O. Box 1122 Afula Illit, 18550, Israel  
 Telephone: 972-4-6069700  
 Fax: 972-4-6405911  
 Email: info@sysmetric-ltd.com  
 Internet: www.sysmetric-ltd.com

### WORLDWIDE CONTACTS

**Benelux**  
**Moretec Plastic Machinery BV**  
 Driebarweg 27  
 1607 ML Hem  
 Tel: +31-229-279030  
 Fax: +31-229-279025  
 sales@moretec.nl  
 www.moretec.nl

**France**  
**Extrudex**  
 65 Avenue Joffre  
 92250, La Garenne Colombes, France  
 Tel: +33-147602050  
 Fax: +33-147859108  
 extruchim@wanadoo.fr

**Germany**  
**MEZ Badower GMBH**  
 Automatisierungstechnik  
 Breite Strasse 53, 52353  
 Düren, Germany  
 Tel: +49-2421-98610  
 Fax: +49-2421-986122  
 badower@mezbadower.de

**India**  
**VISTA Inter Trade Pvt. Ltd.**  
 41, Moraya Industrial Complex  
 T-201/1, M.I.D.C. BHOSARI  
 Dist. Pune - 411 026 (Maharashtra),  
 India  
 Tel: +91 9890512147  
 abhijit@vistaint.com

**Greece**  
**Orbit Polymers S.A.**  
 14 Pentelis Ave.  
 Vrilissia 15235 Athens, Greece  
 Tel: +30 (210) 683 7097  
 Fax: +30 (210) 682 8882  
 orbit@orbitpolymers.gr

**Mexico**  
**Simchoni Automation Systems**  
 Mexico S.A. de C.V.  
 Adolfo Lopez Mateos No. 777  
 Col. San Salvador Tizatlalli  
 Metepec, Edo. de Mexico, CP 52172,  
 Mexico  
 Tel: +52 (01) 722237 4810  
 Fax: +52 (01) 722237 4951  
 info@simchoni-mexico.com  
 www.simchoni-mexico.com

**Poland**  
**NOVA - 93 Sp. z o.o.**  
 ul. Bielska 2  
 Pszczyna, 43-200, Poland  
 Tel: +48-32-2100122  
 Fax: +48-32-4470853  
 info@nova93.com.pl

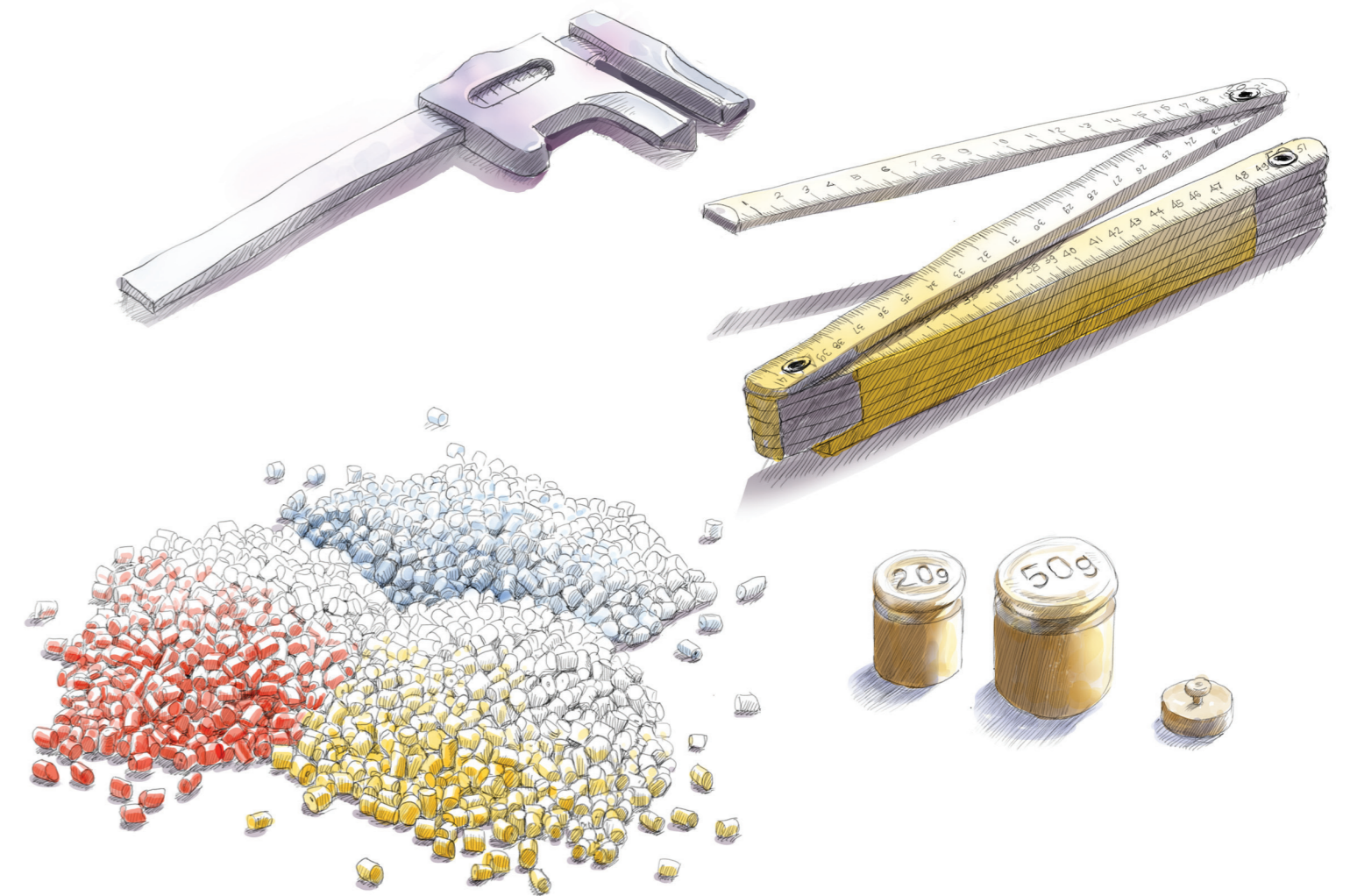
**Spain**  
**Elux Systems LTD**  
 Vic 14, 08006  
 Barcelona, Spain  
 Tel: +372 602 7731  
 elux@netvision.net.il

**South Africa**  
**Adex Plastics & Machinery cc**  
 4, Plantation Road, Eastleigh  
 Edenvale, Johannesburg, 1609,  
 South Africa  
 Tel: + 27 11 524 0095  
 Fax: + 27 11 524 0096  
 Mobile: + 27 82 552 1176  
 pnclark@adex.co.za  
 http://www.adexsa.co.za

**South Korea**  
**Tec Corp. Ltd**  
 341-7 Seohyun-Dong, Bundang-Gu  
 Seongnam-Si, Gyeonggi-Do, Korea  
 (South)  
 Tel: + 82-317813315  
 Fax: +82-317813317  
 bluesky@teccorp.co.kr

**Turkey**  
**Grupak Plastik Makina**  
**IC VE DIS.**  
 ISTOC 43 ADA NO. 16  
 Mahmutbey Istanbul, 34550, Turkey  
 Tel: +90 212 6596488  
 Fax: +90 212 6596490  
 info@grupak.com

**USA**  
**CMD Corporation**  
 2901 E Pershing Street, P.O. Box 1279  
 Appleton, WI, 54912-1279, USA  
 Tel: +19207306888  
 Fax: +19207306894  
 info@cmd-corp.com  
 www.cmd-corp.com



**Sysmetric** provides comprehensive solutions for raw material handling, gravimetric dosing and gravimetric screw control.



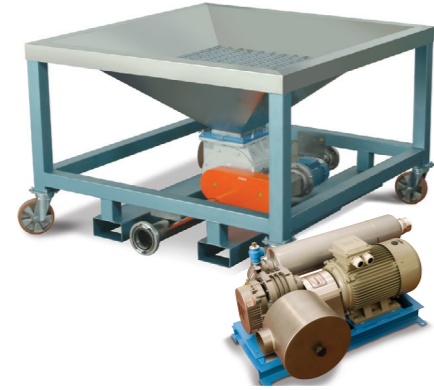
*simply accurate*

## STORAGE AND CONVEYANCE



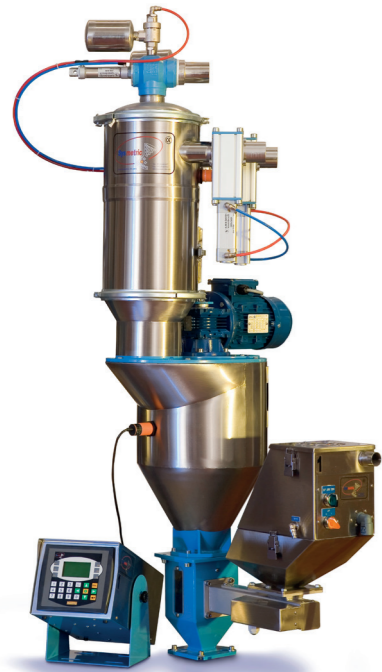
### Graviman™

Loss in weight unit.  
For precise extruder layer control  
in a multi-layer line and for  
extruder output supervision.  
Made of stainless steel.



### Silo Loading

A stainless steel mobile loading  
station with rotary valve.  
Wide range of loading pumps  
and blowers.  
Accurate material level option.



### InjMix

The perfect, economic dosing and mixing  
system for small injection molding machines.  
Stainless steel hopper loader with proportional  
valve for virgin and "self regrind".  
One or more gravimetric feeders for M/B  
or additives.  
Integrated cascade mixer for homogeneous  
materials mix.



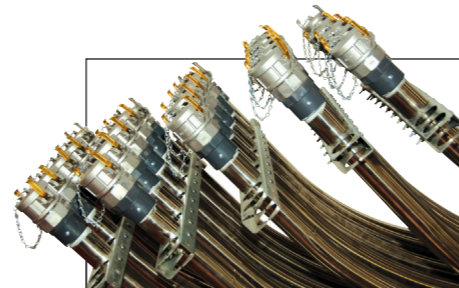
### Hopper Loaders

Part of central vacuum system.  
Stainless steel hoppers from 2 to 60 liters.  
Automatic "blow back" for self cleaning.

### Manifold Change-Over

Easy and flexible  
connection between any  
material source and any  
machine.

**Optional**  
IDMan software.  
Centralina.



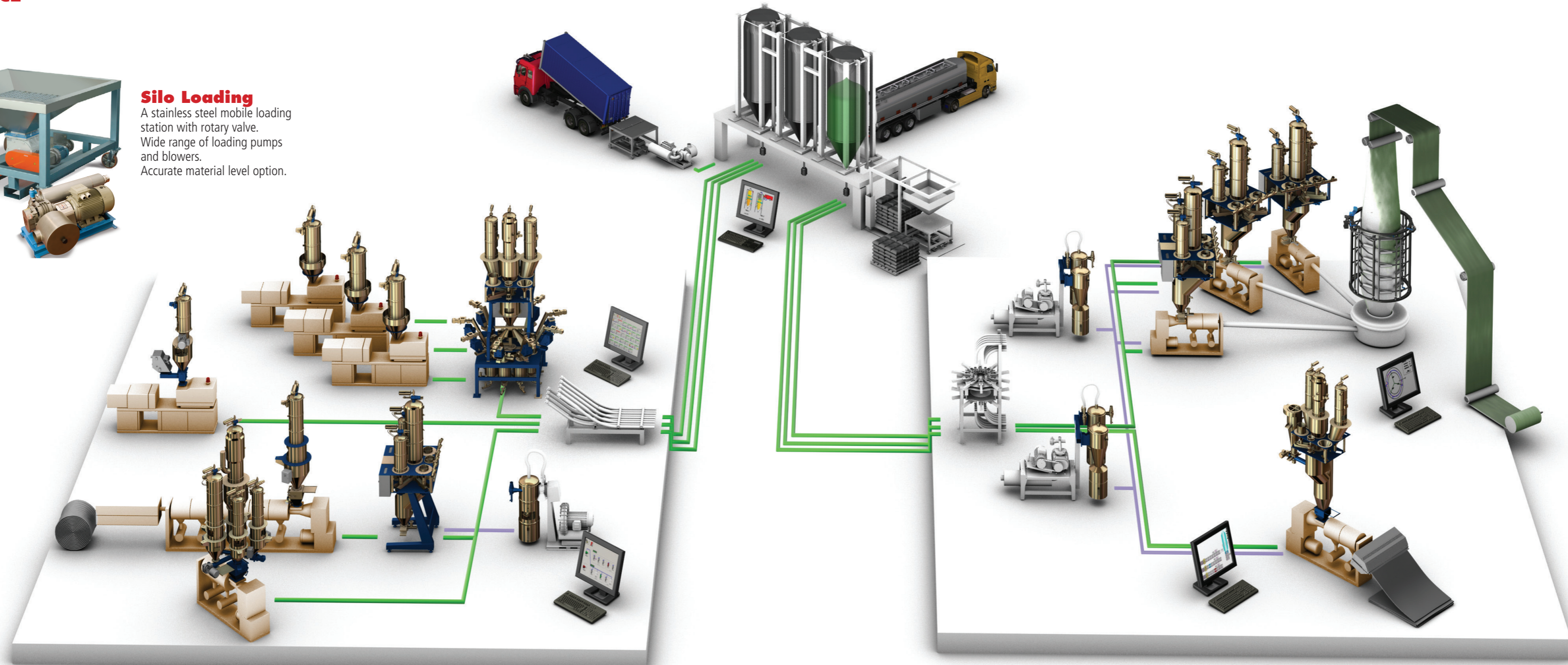
### Central Vacuum Units

A variety of pumps for  
different needs and applications.  
Positive displacement  
rotary blowers.  
Regenerative side channel  
blowers.  
Self cleaning filter.  
Protection static filter.  
Optional protection cyclone.



### Vacuum-Backup

"Hot backup" technology  
enables energy saving and  
automatic recovery from  
pump failure.



## "VISION" SCADA SOFTWARE

Sysmetric's "Vision" software is an essential  
management tool.

All systems can be operated and monitored by the  
advanced SCADA Vision software modules that  
provide factory management with invaluable real  
time information on raw material dosing, material  
consumption and production rates. The software  
provides data acquisition and extensive report  
generating:

**SiloMan™** Silo monitoring and management  
software.

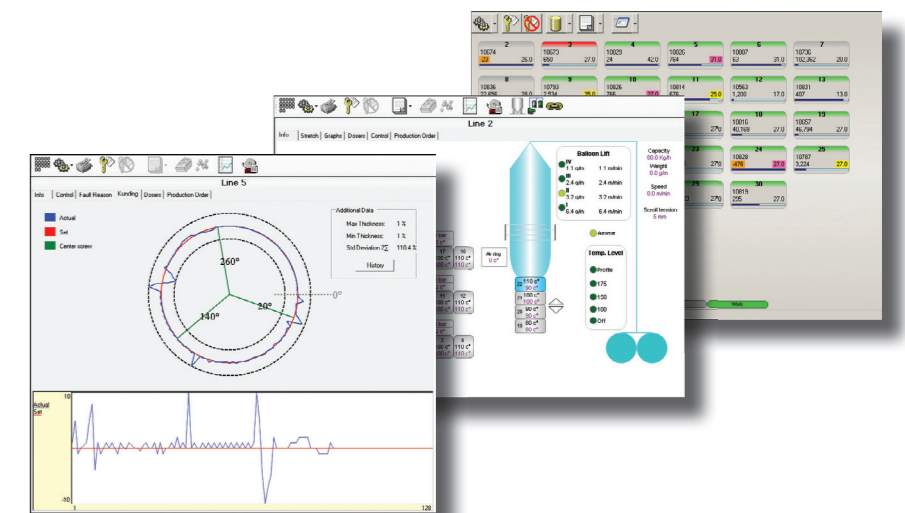
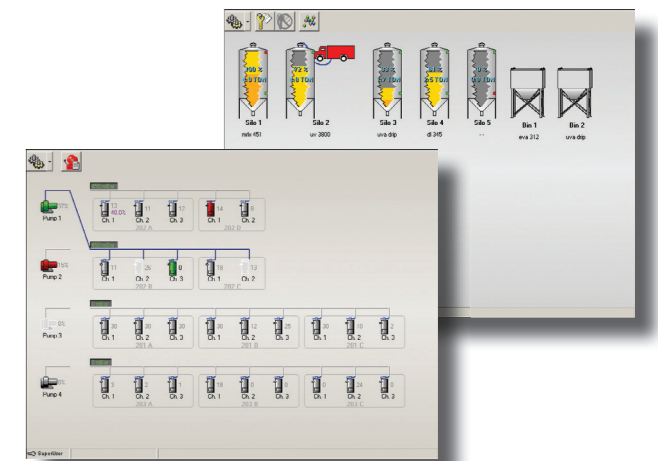
**VacMon™** Supervising and control of the central  
vacuum system and all of its components.

**IDMan™** Identification monitoring software for  
manifold change-over.

**MinuMan™** Supervising and data acquisition for  
extrusion dosing units and extruder screw control.

**InjMan™** Supervising and data acquisition for  
injection dosing and production.

The Sysmetric "Vision" software can integrate with  
the factory ERP and can be utilized from several  
plant computers without additional cost.



## GRAVIMETRIC DOSERS



### CD Series™

**Batch type** gravimetric doser. Up to six individual components. High accuracy of +/- 0.1%. Exceptionally good mixing. Main component percentage range: 0% or 20-100%. Other component percentage range: 0-100%.  
 CD 100 – up to 100 kg/h.  
 CD 400 – up to 400 kg/h.  
 CD 800 – up to 800 kg/h.  
 CD 800 HD-200 – up to 1000 kg/h.  
 CD 800 HD-400 – up to 1200 kg/h.  
 CD 800 HD-600 – up to 1500 kg/h.  
 Can be installed on or off the machine's throat.



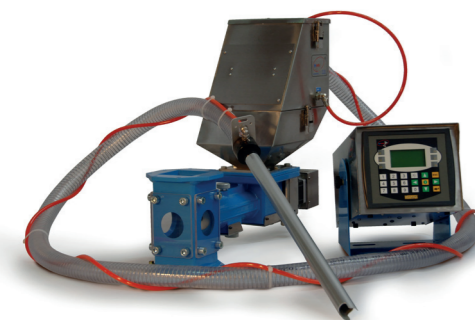
### CD Plus™ Series

**Batch type** standard CD-400 and CD-800 systems with automatic self recycling screw. For extrusion inline machines and continuous edge trimming lines.



### Beltcolor™

**Loss in weight** gravimetric belt doser for colors and additives. For extrusion and injection molding. Wide dynamic feeding range under one setup. Exceptional linear feeding rate. Built-in Venturi loader. Suitable for granules and micro granules. Works in combination with the CD Dosing Systems.



### Gravicolor™

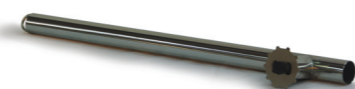
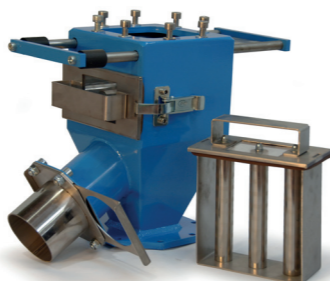
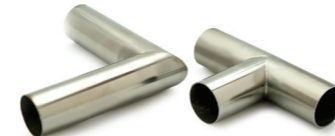
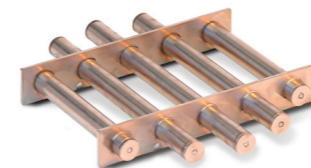
**Loss in weight** gravimetric screw doser for colors and additives. For extrusion and injection molding. Built-in Venturi loader. Works in combination with the CD Dosing Systems.



### LW Series™

**Loss in weight** gravimetric dosing unit. Up to 8 components. The ultimate doser for dosing materials with different properties and for extruder starvation feeding. Easy to commit line control. Can be installed on or off the machine's throat.

## A C C E S S O R I E S



*simply accurate*

### Head Office

P.O. Box 1122 Afula Illit, 18550, Israel  
 Telephone: 972-4-6069700  
 Fax: 972-4-6405911  
 Email: info@sysmetric-ltd.com  
 Internet: www.sysmetric-ltd.com

### WORLDWIDE CONTACTS

**Benelux**  
**Moretec Plastic Machinery BV**  
 Driebanweg 27  
 1607 ML Hem  
 Tel: +31-229-279030  
 Fax: +31-229-279025  
 sales@moretec.nl  
 www.moretec.nl

**France**  
**Extrudex**  
 65 Avenue Joffre  
 92250, La Garenne Colombes, France  
 Tel: +33-147602050  
 Fax: +33-147859108  
 extruchim@wanadoo.fr

**Germany**  
**MEZ Badower GMBH**  
 Automatisierungstechnik  
 Breite Strasse 53, 52353  
 Düren, Germany  
 Tel: +49-2421-98610  
 Fax: +49-2421-986122  
 badower@mezbadower.de

**India**  
**VISTA Inter Trade Pvt. Ltd.**  
 41, Moraya Industrial Complex  
 T-201/1, M.I.D.C, BHOSARI  
 Dist. Pune - 411 026 (Maharashtra),  
 India  
 Tel: +91 9890512147  
 abhijit@vistaint.co.in

**Greece**  
**Orbit Polymers S.A.**  
 14 Pentelis Ave.  
 Vrilissia 15235 Athens, Greece  
 Tel: +30 (210) 683 7097  
 Fax: +30 (210) 682 8882  
 orbit@orbitpolymers.gr

**Mexico**  
**Simchoni Automation Systems**  
 Mexico S.A. de C.V.  
 Adolfo Lopez Mateos No. 777  
 Col. San Salvador Tizatlalli  
 Metepec, Edo. de Mexico, CP 52172,  
 Mexico  
 Tel: +52 (01) 722237 4810  
 Fax: +52 (01) 722237 4951  
 info@simchoni-mexico.com  
 www.simchoni-mexico.com

**Poland**  
**NOVA - 93 Sp. z o.o.**  
 ul. Bielska 2  
 Pszczyna, 43-200, Poland  
 Tel: +48-32-2100122  
 Fax: +48-32-4470853  
 info@nova93.com.pl

**Spain**  
**Elux Systems LTD**  
 Vic 14, 08006  
 Barcelona, Spain  
 Tel. +372 602 7731  
 elux@netvision.net.il

**South Africa**  
**Adex Plastics & Machinery cc**  
 4, Plantation Road, Eastleigh  
 Edenvale, Johannesburg, 1609,  
 South Africa  
 Tel: + 27 11 524 0095  
 Fax: + 27 11 524 0096  
 Mobile: + 27 82 552 1176  
 pnclark@adex.co.za  
 http://www.adexsa.co.za

**South Korea**  
**Tec Corp. Ltd**  
 341-7 Seohyun-Dong, Bundang-Gu  
 Seongnam-Si, Gyeonggi-Do, Korea  
 (South)  
 Tel: + 82-317813315  
 Fax: +82-317813317  
 bluesky@teccorp.co.kr

**Turkey**  
**Grupak Plastik Makina**  
**IC VE DIS.**  
 ISTOC 43 ADA NO. 16  
 Mahmutbey Istanbul, 34550, Turkey  
 Tel: +90 212 6596488  
 Fax: +90 212 6596490  
 info@grupak.com

**USA**  
**CMD Corporation**  
 2301 E Pershing Street, P.O. Box 1279  
 Appleton, WI, 54912-1279, USA  
 Tel: +19207306888  
 Fax: +19207306894  
 info@cmd-corp.com  
 www.cmd-corp.com



**Sysmetric** provides comprehensive solutions for raw material handling, gravimetric dosing and gravimetric screw control.

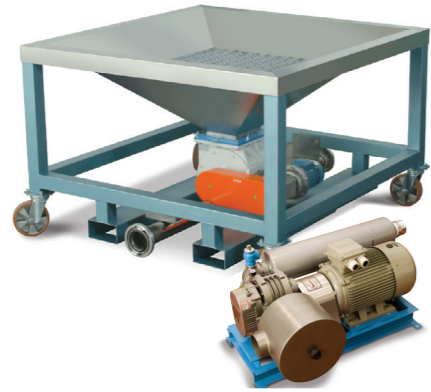


*simply accurate*

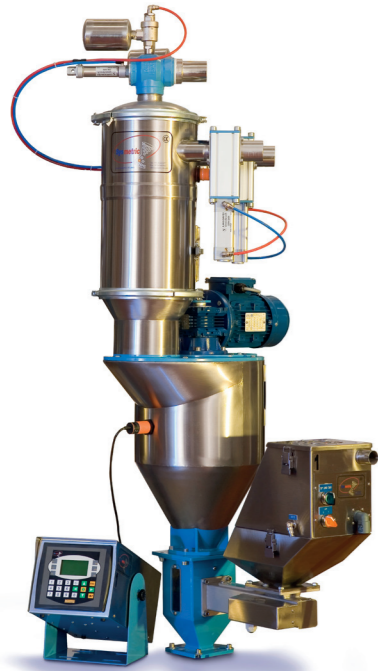
## STORAGE AND CONVEYANCE



**Graviman™**  
Loss in weight unit.  
For precise extruder layer control  
in a multi-layer line and for  
extruder output supervision.  
Made of stainless steel.



**Silo Loading**  
A stainless steel mobile loading  
station with rotary valve.  
Wide range of loading pumps  
and blowers.  
Accurate material level option.



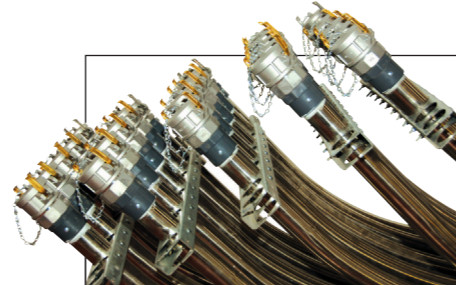
**InjMix**  
The perfect, economic dosing and mixing  
system for small injection molding machines.  
Stainless steel hopper loader with proportional  
valve for virgin and "self regrind".  
One or more gravimetric feeders for M/B  
or additives.  
Integrated cascade mixer for homogeneous  
materials mix.



**Hopper Loaders**  
Part of central vacuum system.  
Stainless steel hoppers from 2 to 60 liters.  
Automatic "blow back" for self cleaning.

### Manifold Change-Over

Easy and flexible  
connection between any  
material source and any  
machine.  
**Optional**  
IDMan software.  
Centralina.



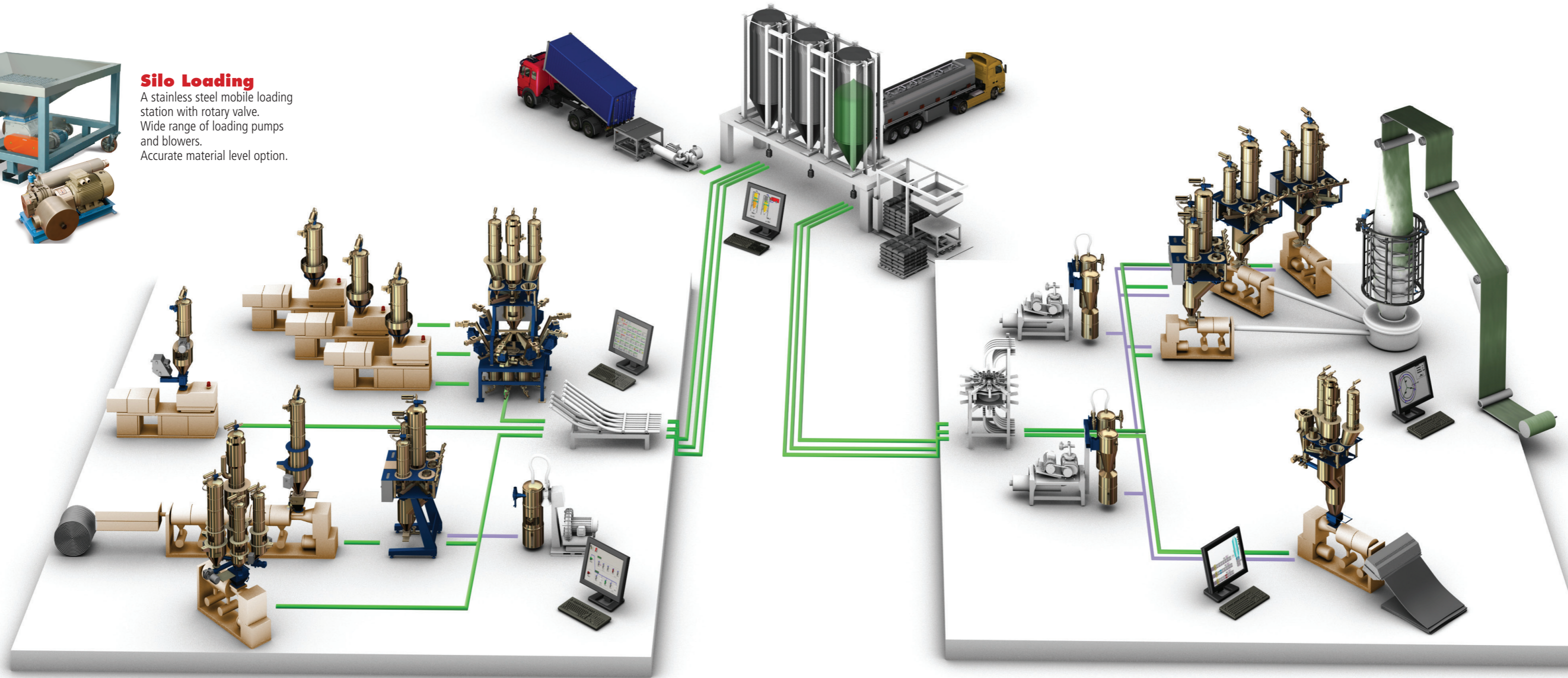
### Central Vacuum Units

A variety of pumps for  
different needs and applications.  
Positive displacement  
rotary blowers.  
Regenerative side channel  
blowers.  
Self cleaning filter.  
Protection static filter.  
Optional protection cyclone.



### Vacuum-Backup

"Hot backup" technology  
enables energy saving and  
automatic recovery from  
pump failure.



## "VISION" SCADA SOFTWARE

Sysmetric's "Vision" software is an essential  
management tool.  
All systems can be operated and monitored by the  
advanced SCADA Vision software modules that  
provide factory management with invaluable real  
time information on raw material dosing, material  
consumption and production rates. The software  
provides data acquisition and extensive report  
generating:  
**SiloMan™** Silo monitoring and management  
software.  
**VacMon™** Supervising and control of the central  
vacuum system and all of its components.  
**IDMan™** Identification monitoring software for  
manifold change-over.  
**MinuMan™** Supervising and data acquisition for  
extrusion dosing units and extruder screw control.  
**InjMan™** Supervising and data acquisition for  
injection dosing and production.  
The Sysmetric "Vision" software can integrate with  
the factory ERP and can be utilized from several  
plant computers without additional cost.

